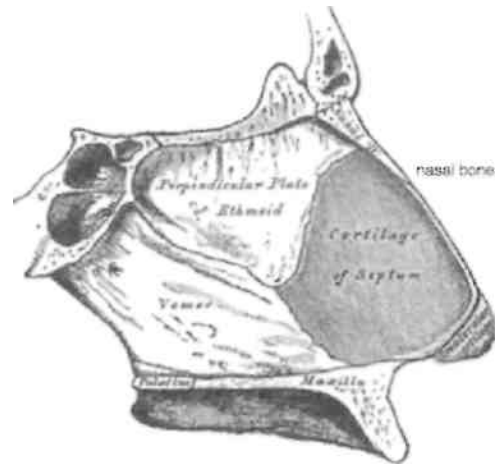


Deviated Nasal Septum

What Is the Nasal Septum?

The nasal septum divides the right and left side of the nasal cavity. Normally, the nasal septum lies in the center of the nose and rests on the maxillary crest (bony part of the floor of the nose). The septum is made up of cartilage in the front and bone in the back.

The diagram shows the cartilage and bony parts of the septum.



What Is a Deviated Nasal Septum?

When the septum does not align in the middle of the nose it is called a Deviated Nasal Septum. Most nasal septums are not perfectly straight. The septum may be deviated toward one side either in the front or the back. A certain amount of bending is acceptable. If the septum is too crooked and results in breathing or sinus problems then the septum may require repair.

What Are the Signs of a Deviated Nasal Septum?

The most common sign from a significantly deviated septum is difficulty breathing through the nose, particularly on one side. In some cases, the crooked septum can interfere with the drainage of the sinuses, resulting in repeated sinus infections.

How Do You Diagnose a Deviated Nasal Septum?

Deviated nasal septums are diagnosed simply by looking in the office or by using an endoscope to look further back in the nose. CAT scans (a type of x-ray) may also reveal deviated nasal septums.